

# FLEX PENINSULA FIREPLACES

FIREPLACE INSERTS



### Room Divider Application

Peninsula fireplaces feature three open sides - view the flame from the front, back and open side.

### Clean Burning

Fueled by clean burning e-NRG bioethanol

### UL Listed

Every model in the Flex Series is manufacturer approved for use with EcoSmart's UL Listed burners.



### Toughened Safety Screen

Your Flex Fireplace features toughened glass to stabilise the flame in windy conditions and provide an additional layer of safety and comfort. The integrated windscreens sit flush behind the frame.

### Decorative Side Box

When a decorative box is added, the panel between the standard fire and the decorative box is glass.



### Luxurious Finish

Available in a timeless black finish, Flex Fireplaces come with stainless steel burners and glass charcoal.

### Decorative Steel Log Sets

EcoSmart Fire offers non-combustible logs as an optional, eye-catching accessory for models with the decorative side box. Made from stainless steel with a patina finish, they are available in two different finishes: Brass or Copper.

### True Zero Clearance

Self-contained, zero clearance construction allows your Flex fireplace to be framed into wood or metal studs, providing installation freedom and flexibility for builders, architects, interior designers, landscapers and homeowners.

### Built to Last a Lifetime

Zinc sealed steel construction powder coated with super hi-temp black paint prevents rusting so all fireplaces can be used both indoors or outdoors.



Decorative Steel Logs

Disclaimer: All product specifications and data are subject to change without notice and believed to be correct at the time of publication. The Fire Company Pty Ltd (TFC), its affiliates, agents, and employees, and all persons acting on its or their behalf (collectively, "The Fire Company"), disclaim any and all liability for any errors, inaccuracies or incompleteness contained herein or in any other disclosure relating to any product. TFC disclaims any and all liability arising out of the use or application of any product described herein or of any information provided herein to the maximum extent permitted by law. The product specifications do not expand or otherwise modify TFC's terms and conditions of purchase, including but not limited to the warranty expressed therein, which apply to these products. No license, express or implied, by estoppel or otherwise, to any intellectual property rights is granted by this document or by any conduct of TFC. Customers using or selling TFC products not expressly indicated for use in such applications do so entirely at their own risk and agree to fully indemnify TFC for any damages arising or resulting from such use or sale. Please contact authorised personnel from TFC to obtain written terms and conditions regarding products designed for such applications. Images are indicative only.

**PENINSULA FIREPLACES**

**FLEX50**

Minimum Wall Length 1,475mm [58in]



50PN

**FLEX68**

Minimum Wall Length 1,930mm [76in]



68PN



68PN.BXL



68PN.BXR

**FLEX86**

Minimum Wall Length 2,388mm [94in]



86PN



86PN.BXL



86PN.BXR



86PN.BX2

**FLEX104**

Minimum Wall Length 2,845mm [112in]



104PN.BXL



104PN.BXR



104PN.BX2

*Peninsula can be rotated so side glass panel appears on the right*

## PENINSULA FIREPLACES

### FLEX122

Minimum Wall Length 3,302mm [130in]



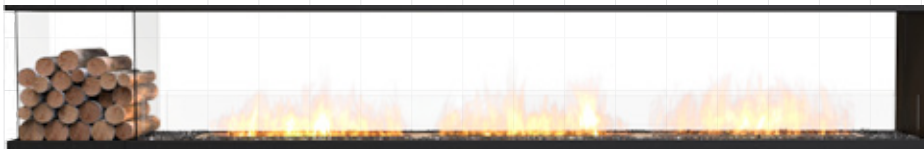
122PN



122PN.BX2

### FLEX140

Minimum Wall Length 3,760mm [148in]



140PN.BXL



140PN.BXR

### FLEX158

Minimum Wall Length 4,220mm [166in]



158PN.BX2

## PENINSULA FIREPLACES

<b>Application</b>	Indoor & Outdoor
<b>Materials</b>	Mild Steel (Zinc Sealed), Toughened Glass, Stainless Steel & Glass Charcoal as Decorative Media
<b>Colours</b>	Black Firebox, Stainless Steel Burner/s
<b>Fuel Type</b>	e-NRG Bioethanol

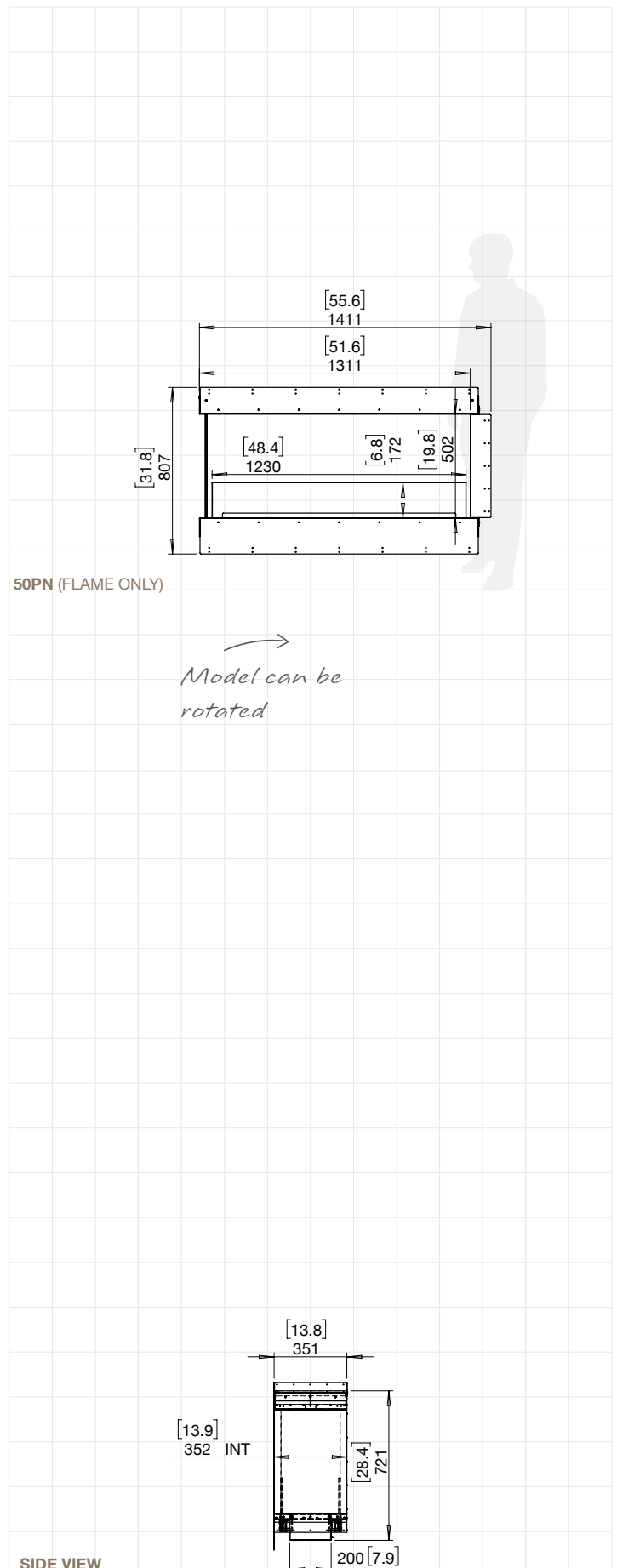
## FLEX50

### ESF.1.FX.50PN

<b>Weight</b>	59.1kg [130lbs] (Incl. burner/s, glass charcoal, glass)
<b>Burner*</b>	XL900 x 1
<b>Volume Capacity</b>	9 Litres [2.4 Gallons]
<b>Heats on Average (when used indoors)</b>	Over 60 square metres [645 square feet]
<b>Burn Time</b>	8 - 13 hours (approx)
<b>Minimum Room Size</b>	110 cubic metres [3884 cubic feet] per fireplace.

Physical model dimensions should be verified against cut out dimensions BEFORE installation begins to confirm tolerances align.

\* The efficiency data outlined above is indicative only and may vary depending on the model purchased, weather conditions, installation and bioethanol used.



### FOR MORE INFORMATION PLEASE REFERENCE THE CLEARANCE & INSTALLATION MANUAL

Disclaimer. All product specifications and data are subject to change without notice and believed to be correct at the time of publication. The Fire Company Pty Ltd (TFC), its affiliates, agents, and employees, and all persons acting on its or their behalf (collectively, "The Fire Company"), disclaim any and all liability for any errors, inaccuracies or incompleteness contained herein or in any other disclosure relating to any product. TFC disclaims any and all liability arising out of the use or application of any product described herein or of any information provided herein to the maximum extent permitted by law. The product specifications do not expand or otherwise modify TFC P/L's terms and conditions of purchase, including but not limited to the warranty expressed therein, which apply to these products. No license, express or implied, by estoppel or otherwise, to any intellectual property rights is granted by this document or by any conduct of TFC. Customers using or selling TFC products not expressly indicated for use in such applications do so entirely at their own risk and agree to fully indemnify TFC for any damages arising or resulting from such use or sale. Please contact authorised personnel from TFC to obtain written terms and conditions regarding products designed for such applications. Images are indicative only.

## PENINSULA FIREPLACES

<b>Application</b>	Indoor & Outdoor
<b>Materials</b>	Mild Steel (Zinc Sealed), Toughened Glass, Stainless Steel & Glass Charcoal as Decorative Media
<b>Colours</b>	Black Firebox, Stainless Steel Burner/s
<b>Fuel Type</b>	e-NRG Bioethanol

## FLEX68

### ESF.1.FX.68BY

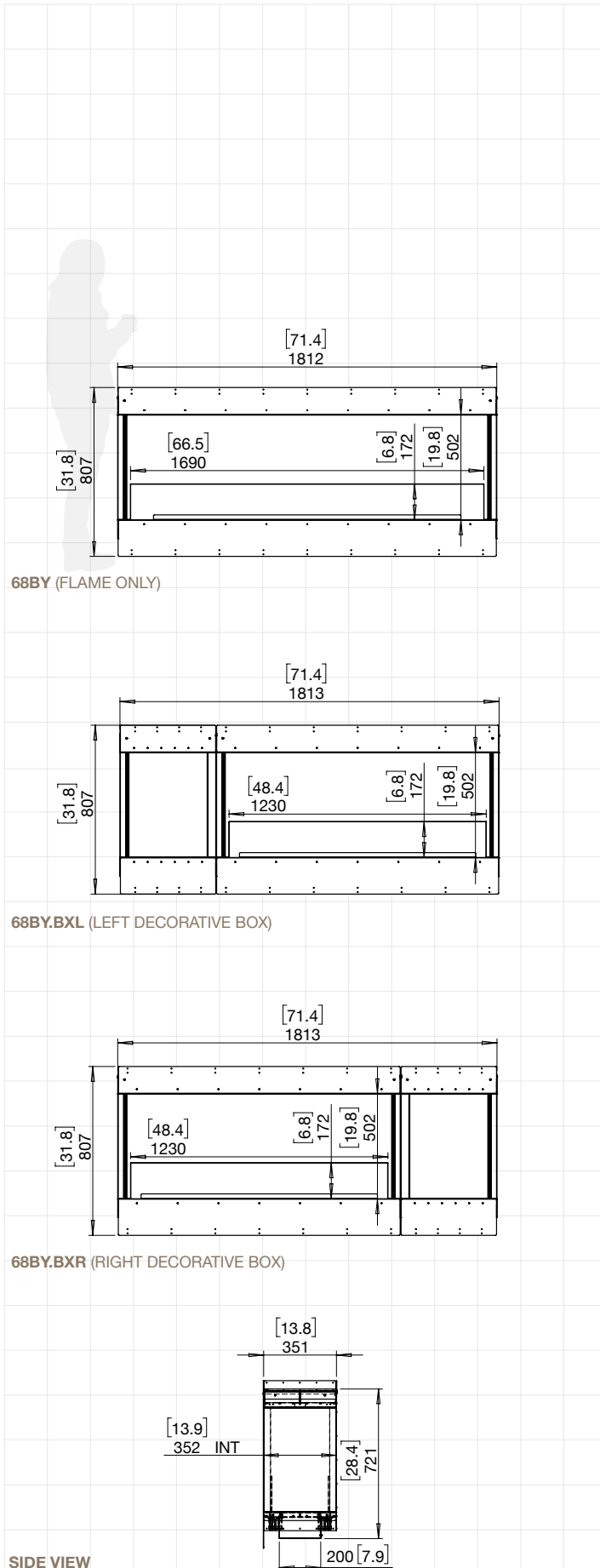
<b>Weight</b>	96.1kg [211.4 lbs] (Incl. burner/s, glass charcoal, glass)
<b>Burner*</b>	XL700 x 2
<b>Volume Capacity</b>	7 Litres [1.8 Gallons] x 2
<b>Heats on Average (when used indoors)</b>	Over 100 square metres [1076 square feet]
<b>Burn Time</b>	9 - 12 hours (approx)
<b>Minimum Room Size</b>	180 cubic metres [6357 cubic feet] per fireplace

### ESF.1.FX.68BY.BXL ESF.1.FX.68BY.BXR

<b>Weight</b>	95.5kg [210.1 lbs] (Incl. burner/s, glass charcoal, glass)
<b>Burner*</b>	XL900 x 1
<b>Volume Capacity</b>	9 Litres [2.4 Gallons]
<b>Heats on Average (when used indoors)</b>	Over 60 square metres [645 square feet]
<b>Burn Time</b>	8 - 13 hours (approx)
<b>Minimum Room Size</b>	110 cubic metres [3884 cubic feet] per fireplace.

Physical model dimensions should be verified against cut out dimensions BEFORE installation begins to confirm tolerances align.

\* The efficiency data outlined above is indicative only and may vary depending on the model purchased, weather conditions, installation and bioethanol used.



68BY (FLAME ONLY)

68BY.BXL (LEFT DECORATIVE BOX)

68BY.BXR (RIGHT DECORATIVE BOX)

SIDE VIEW

FOR MORE INFORMATION PLEASE REFERENCE THE CLEARANCE & INSTALLATION MANUAL

Disclaimer: All product specifications and data are subject to change without notice and believed to be correct at the time of publication. The Fire Company Pty Ltd (TFC), its affiliates, agents, and employees, and all persons acting on its or their behalf (collectively, "The Fire Company"), disclaim any and all liability for any errors, inaccuracies or incompleteness contained herein or in any other disclosure relating to any product. TFC disclaims any and all liability arising out of the use or application of any product described herein or of any information provided herein to the maximum extent permitted by law. The product specifications do not expand or otherwise modify TFC's terms and conditions of purchase, including but not limited to the warranty expressed therein, which apply to these products. No license, express or implied, by estoppel or otherwise, to any intellectual property rights is granted by this document or by any conduct of TFC. Customers using or selling TFC products not expressly indicated for use in such applications do so entirely at their own risk and agree to fully indemnify TFC for any damages arising or resulting from such use or sale. Please contact authorised personnel from TFC to obtain written terms and conditions regarding products designed for such applications. Images are indicative only.

## PENINSULA FIREPLACES

<b>Application</b>	Indoor & Outdoor
<b>Materials</b>	Mild Steel (Zinc Sealed), Toughened Glass, Stainless Steel & Glass Charcoal as Decorative Media
<b>Colours</b>	Black Firebox, Stainless Steel Burner/s
<b>Fuel Type</b>	e-NRG Bioethanol

## FLEX86

### ESF.1.FX.86PN

<b>Weight</b>	102.5kg [225.5lbs] (Incl. burner/s, glass charcoal, glass)
<b>Burner*</b>	XL900 x 2
<b>Volume Capacity</b>	9 Litres [2.4 Gallons] x 2
<b>Heats on Average</b>	Over 120 square metres [1290 square feet]
<b>Burn Time</b>	8 - 13 hours (approx)
<b>Minimum Room Size</b>	220 cubic metres [7768 cubic feet] per fireplace

### ESF.1.FX.86PN.BX2

<b>Weight</b>	108.7kg [239.1lbs] (Incl. burner/s, glass charcoal, glass)
<b>Burner*</b>	XL900 x 1
<b>Volume Capacity</b>	9 Litres [2.4 Gallons]
<b>Heats on Average</b>	Over 60 square metres [645 square feet]
<b>Burn Time</b>	8 - 13 hours (approx)
<b>Minimum Room Size</b>	110 cubic metres [3884 cubic feet] per fireplace

### ESF.1.FX.86PN.BXL ESF.1.FX.86PN.BXR

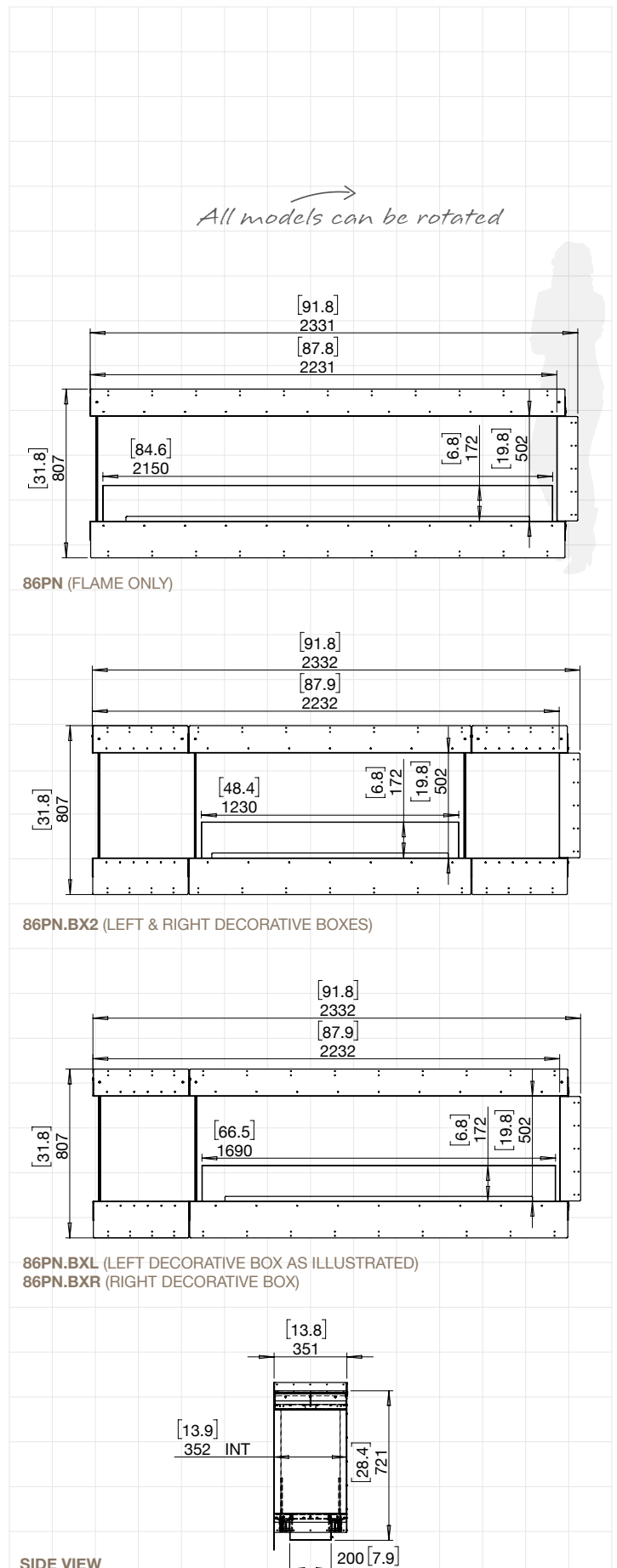
<b>Weight</b>	104.9kg [230.8lbs] (Incl. burner/s, glass charcoal, glass)
<b>Burner*</b>	XL700 x 2
<b>Volume Capacity</b>	7 Litres [1.8 Gallons] x 2
<b>Heats on Average</b>	Over 100 square metres [1076 square feet]
<b>Burn Time</b>	9 - 12 hours (approx)
<b>Minimum Room Size</b>	180 cubic metres [6357 cubic feet] per fireplace

Physical model dimensions should be verified against cut out dimensions BEFORE installation begins to confirm tolerances align.

\* The efficiency data outlined above is indicative only and may vary depending on the model purchased, weather conditions, installation and bioethanol used.

## FOR MORE INFORMATION PLEASE REFERENCE THE CLEARANCE & INSTALLATION MANUAL

Disclaimer: All product specifications and data are subject to change without notice and believed to be correct at the time of publication. The Fire Company Pty Ltd (TFC), its affiliates, agents, and employees, and all persons acting on its or their behalf (collectively, "The Fire Company"), disclaim any and all liability for any errors, inaccuracies or incompleteness contained herein or in any other disclosure relating to any product. TFC disclaims any and all liability arising out of the use or application of any product described herein or of any information provided herein to the maximum extent permitted by law. The product specifications do not expand or otherwise modify TFC's terms and conditions of purchase, including but not limited to the warranty expressed therein, which apply to these products. No license, express or implied, by estoppel or otherwise, to any intellectual property rights is granted by this document or by any conduct of TFC. Customers using or selling TFC products not expressly indicated for use in such applications do so entirely at their own risk and agree to fully indemnify TFC for any damages arising or resulting from such use or sale. Please contact authorised personnel from TFC to obtain written terms and conditions regarding products designed for such applications. Images are indicative only.



## PENINSULA FIREPLACES

<b>Application</b>	Indoor & Outdoor
<b>Materials</b>	Mild Steel (Zinc Sealed), Toughened Glass, Stainless Steel & Glass Charcoal as Decorative Media
<b>Colours</b>	Black Firebox, Stainless Steel Burner/s
<b>Fuel Type</b>	e-NRG Bioethanol

### FLEX104

#### ESF.1.FX.104PN.BX2

<b>Weight</b>	129.7kg [285.3 lbs] (incl. burner/s, glass charcoal, glass)
<b>Burner*</b>	XL700 x 2
<b>Volume Capacity</b>	7 Litres [1.8 Gallons] x 2
<b>Heats on Average</b>	Over 100 square metres [1076 square feet]
<b>Burn Time</b>	9 - 12 hours (approx)
<b>Minimum Room Size</b>	180 cubic metres [6357 cubic feet] per fireplace

#### ESF.1.FX.104PN.BXL

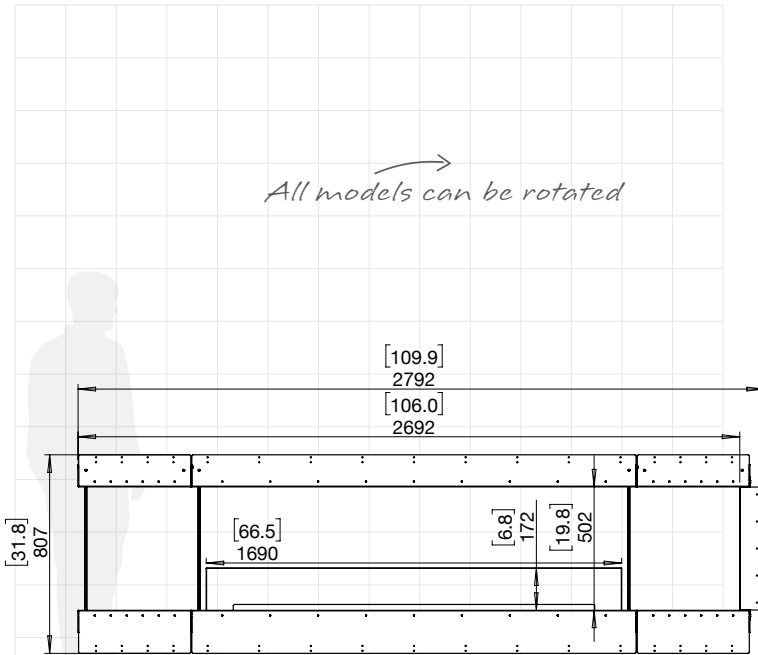
#### ESF.1.FX.104PN.BXR

<b>Weight</b>	127.3kg [280.1lbs] (incl. burner/s, glass charcoal, glass)
<b>Burner*</b>	XL900 x 2
<b>Volume Capacity</b>	9 Litres [2.4 Gallons] x 2
<b>Heats on Average</b>	Over 120 square metres [1290 square feet]
<b>Burn Time</b>	8 - 13 hours (approx)
<b>Minimum Room Size</b>	220 cubic metres [7768 cubic feet] per fireplace

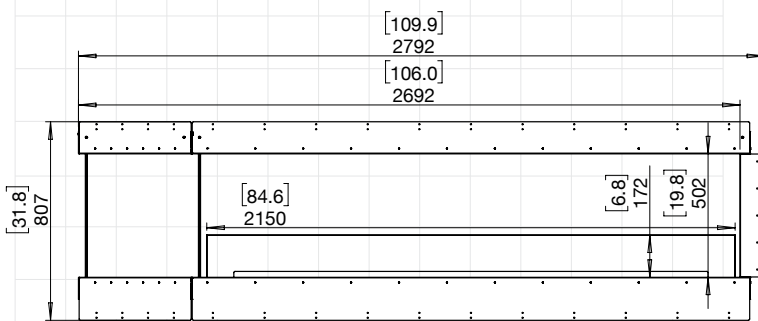
Physical model dimensions should be verified against cut out dimensions BEFORE installation begins to confirm tolerances align.

\* The efficiency data outlined above is indicative only and may vary depending on the model purchased, weather conditions, installation and bioethanol used.

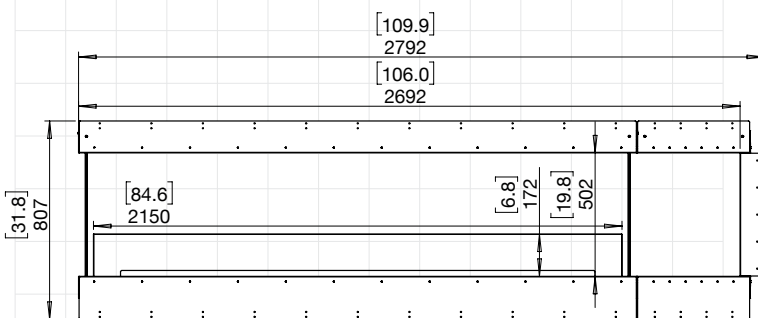
All models can be rotated



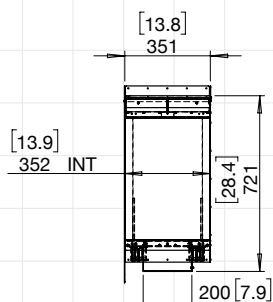
104PN.BX2 (LEFT & RIGHT DECORATIVE BOXES)



104PN.BXL (LEFT DECORATIVE BOX)



104PN.BXR (RIGHT DECORATIVE BOX)



SIDE VIEW

FOR MORE INFORMATION PLEASE REFERENCE THE CLEARANCE & INSTALLATION MANUAL

Disclaimer: All product specifications and data are subject to change without notice and believed to be correct at the time of publication. The Fire Company Pty Ltd (TFC), its affiliates, agents, and employees, and all persons acting on its or their behalf (collectively, "The Fire Company"), disclaim any and all liability for any errors, inaccuracies or incompleteness contained herein or in any other disclosure relating to any product. TFC disclaims any and all liability arising out of the use or application of any product described herein or of any information provided herein to the maximum extent permitted by law. The product specifications do not expand or otherwise modify TFC's terms and conditions of purchase, including but not limited to the warranty expressed therein, which apply to these products. No license, express or implied, by estoppel or otherwise, to any intellectual property rights is granted by this document or by any conduct of TFC. Customers using or selling TFC products not expressly indicated for use in such applications do so entirely at their own risk and agree to fully indemnify TFC for any damages arising or resulting from such use or sale. Please contact authorised personnel from TFC to obtain written terms and conditions regarding products designed for such applications. Images are indicative only.



## PENINSULA FIREPLACES

<b>Application</b>	Indoor & Outdoor
<b>Materials</b>	Mild Steel (Zinc Sealed), Toughened Glass, Stainless Steel & Glass Charcoal as Decorative Media
<b>Colours</b>	Black Firebox, Stainless Steel Burner/s
<b>Fuel Type</b>	e-NRG Bioethanol

## FLEX122

### ESF.1.FX.122PN

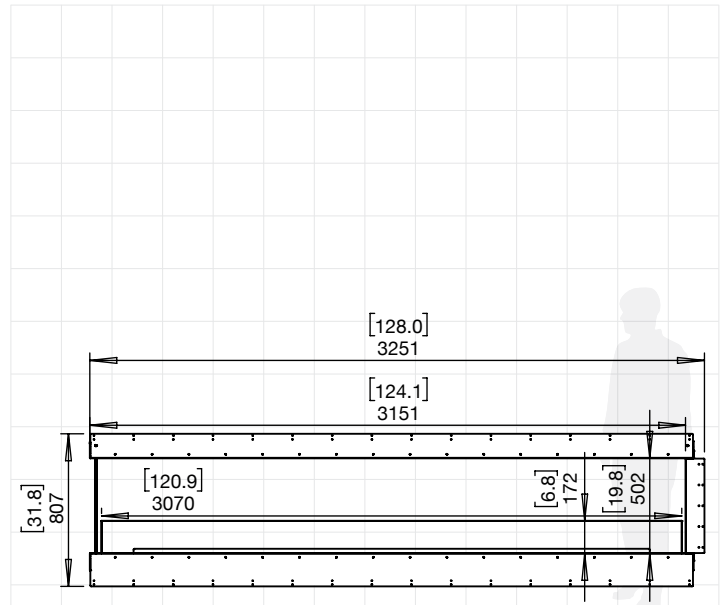
<b>Weight</b>	145.8kg [320.8lbs] (Incl. burner/s, glass charcoal, glass)
<b>Burner*</b>	XL900 x 3
<b>Volume Capacity</b>	9 Litres [2.4 Gallons] x 3
<b>Heats on Average</b>	Over 180 square metres [1935 square feet]
<b>Burn Time</b>	8 - 13 hours (approx)
<b>Minimum Room Size</b>	330 cubic metres [11652 cubic feet] per fireplace

### ESF.1.FX.122PN.BX2

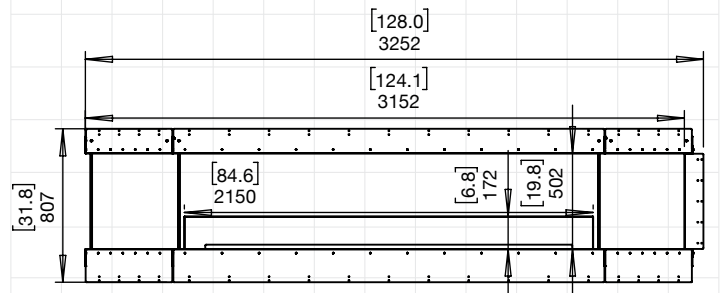
<b>Weight</b>	152.1kg [334.6lbs] (Incl. burner/s, glass charcoal, glass)
<b>Burner*</b>	XL900 x 2
<b>Volume Capacity</b>	9 Litres [2.4 Gallons] x 2
<b>Heats on Average</b>	Over 120 square metres [1290 square feet]
<b>Burn Time</b>	8 - 13 hours (approx)
<b>Minimum Room Size</b>	220 cubic metres [7768 cubic feet] per fireplace

Physical model dimensions should be verified against cut out dimensions BEFORE installation begins to confirm tolerances align.

\* The efficiency data outlined above is indicative only and may vary depending on the model purchased, weather conditions, installation and bioethanol used.

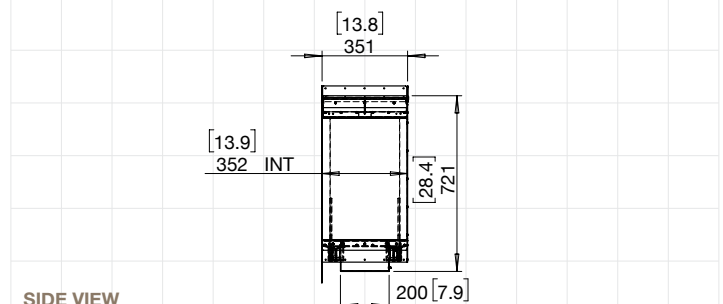


122PN (FLAME ONLY)



122PN.BX2 (LEFT & RIGHT DECORATIVE BOXES)

*All models can be rotated*



SIDE VIEW

### FOR MORE INFORMATION PLEASE REFERENCE THE CLEARANCE & INSTALLATION MANUAL

Disclaimer: All product specifications and data are subject to change without notice and believed to be correct at the time of publication. The Fire Company Pty Ltd (TFC), its affiliates, agents, and employees, and all persons acting on its or their behalf (collectively, "The Fire Company"), disclaim any and all liability for any errors, inaccuracies or incompleteness contained herein or in any other disclosure relating to any product. TFC disclaims any and all liability arising out of the use or application of any product described herein or of any information provided herein to the maximum extent permitted by law. The product specifications do not expand or otherwise modify TFC's terms and conditions of purchase, including but not limited to the warranty expressed therein, which apply to these products. No license, express or implied, by estoppel or otherwise, to any intellectual property rights is granted by this document or by any conduct of TFC. Customers using or selling TFC products not expressly indicated for use in such applications do so entirely at their own risk and agree to fully indemnify TFC for any damages arising or resulting from such use or sale. Please contact authorised personnel from TFC to obtain written terms and conditions regarding products designed for such applications. Images are indicative only.

## PENINSULA FIREPLACES

<b>Application</b>	Indoor & Outdoor
<b>Materials</b>	Mild Steel (Zinc Sealed), Toughened Glass, Stainless Steel & Glass Charcoal as Decorative Media
<b>Colours</b>	Black Firebox, Stainless Steel Burner/s
<b>Fuel Type</b>	e-NRG Bioethanol

### FLEX140

ESF.1.FX.140PN.BXL  
ESF.1.FX.140PN.BXR

<b>Weight</b>	170.6kg [375.3lbs] (incl. burner/s, glass charcoal, glass)
<b>Burner*</b>	XL900 x 3
<b>Volume Capacity</b>	9 Litres [2.4 Gallons] x 3
<b>Heats on Average</b>	Over 180 square metres [1935 square feet]
<b>Burn Time</b>	8 - 13 hours (approx)
<b>Minimum Room Size</b>	330 cubic metres [11652 cubic feet] per fireplace

Physical model dimensions should be verified against cut out dimensions BEFORE installation begins to confirm tolerances align.

\* The efficiency data outlined above is indicative only and may vary depending on the model purchased, weather conditions, installation and bioethanol used.

### FLEX158

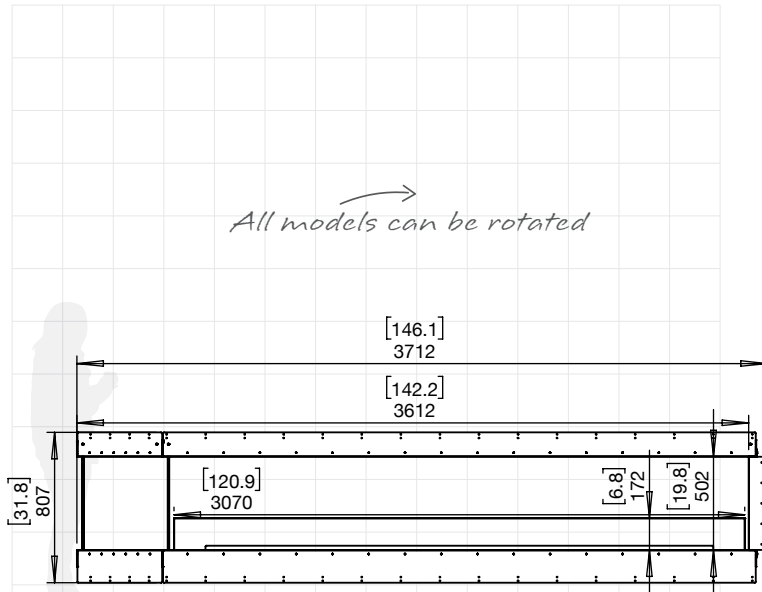
ESF.1.FX.158PN.BX2

<b>Weight</b>	195.4kg [429.9lbs] (incl. burner/s, glass charcoal, glass)
<b>Burner*</b>	XL900 x 3
<b>Volume Capacity</b>	9 Litres [2.4 Gallons] x 3
<b>Heats on Average</b>	Over 180 square metres [1935 square feet]
<b>Burn Time</b>	8 - 13 hours (approx)
<b>Minimum Room Size</b>	330 cubic metres [11652 cubic feet] per fireplace

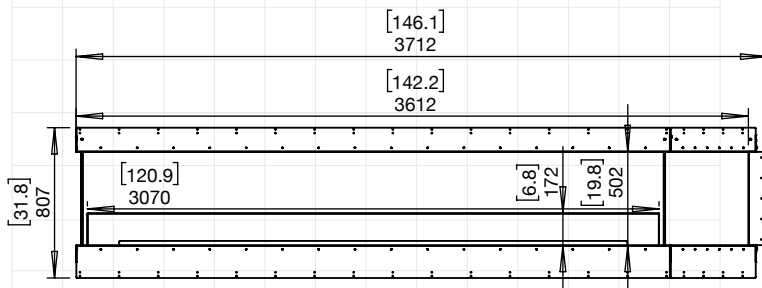
Physical model dimensions should be verified against cut out dimensions BEFORE installation begins to confirm tolerances align.

\* The efficiency data outlined above is indicative only and may vary depending on the model purchased, weather conditions, installation and bioethanol used.

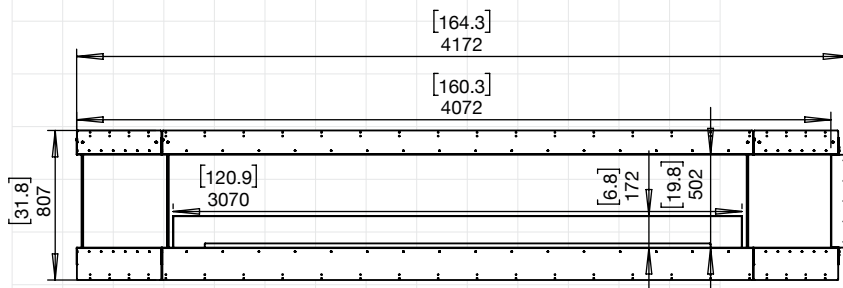
All models can be rotated



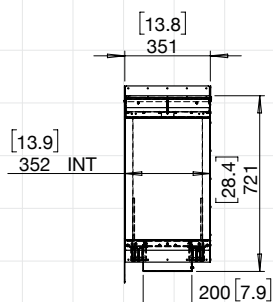
140PN.BXL (LEFT DECORATIVE BOX)



140PN.BXR (RIGHT DECORATIVE BOX)



158PN.BX2 (LEFT & RIGHT DECORATIVE BOXES)



SIDE VIEW

FOR MORE INFORMATION PLEASE REFERENCE THE CLEARANCE & INSTALLATION MANUAL

Disclaimer: All product specifications and data are subject to change without notice and believed to be correct at the time of publication. The Fire Company Pty Ltd (TFC), its affiliates, agents, and employees, and all persons acting on its or their behalf (collectively, "The Fire Company"), disclaim any and all liability for any errors, inaccuracies or incompleteness contained herein or in any other disclosure relating to any product. TFC disclaims any and all liability arising out of the use or application of any product described herein or of any information provided herein to the maximum extent permitted by law. The product specifications do not expand or otherwise modify TFC's terms and conditions of purchase, including but not limited to the warranty expressed therein, which apply to these products. No license, express or implied, by estoppel or otherwise, to any intellectual property rights is granted by this document or by any conduct of TFC. Customers using or selling TFC products not expressly indicated for use in such applications do so entirely at their own risk and agree to fully indemnify TFC for any damages arising or resulting from such use or sale. Please contact authorised personnel from TFC to obtain written terms and conditions regarding products designed for such applications. Images are indicative only.